



# PENN Connected for Food Safety Compliance



Empower Your Process, Protect your Brand and Increase Productivity

The power behind **your mission**







## The Challenges

In this era of smarter food safety, it's important to focus on prevention, creating a traceable food chain, and providing accurate information in a timely fashion. This means compliance, efficiency and loss prevention through standardization and digitalization.

### Compliance

You need a system that gives you the peace of mind that compliance levels are maintained.

### Human Behavior

It's critical to change habits and behaviors to maintain a food safety culture.

### Adaptability

You need a system that will provide the flexibility to adapt to new business models and approaches.

## PENN Connected: A Complete Solution

PENN Connected helps you meet today's challenges and anticipate tomorrow's opportunities.



**Time savings:** Our digital solution means recording and managing daily, on-site records has never been easier.



**Reduced stock loss:** Real-time alerts ensure early intervention, and reduce or eliminate product losses.



**Standard validation:** Creates high level of quality and consistency across all sites.



**Security:** Our automated closed system ensures tamper-proof data acquisition and recording.



**Optimal visibility:** Enterprise view of all sites provides remote access to compliance performance in real-time.



**Sustainability:** Elimination of paper reports reduces your carbon footprint.



**Time management:** Remote access reduces time needed for audits, allowing your team to work on other critical tasks.



**Future Proof:** System is open to ongoing innovation and design of new modules to meet changing legislative requirements.

## Features

Cloud-based, using IoT and the latest digital technology, all fully accessible via mobile device anytime from anywhere, PENN Connected provides a complete food quality, safety and compliance package for you and your team.



**24/7 refrigeration monitoring** of wireless IoT sensors and alarms means the right people receive food safety alerts.



**Dashboard** allows users to assess a site's performance against set KPIs and apply corrective actions as needed.



**Reporting:** Provides easy-to-access, downloadable data.



**Digitized HACCP procedures** allow employees to complete tasks efficiently through an on-site mobile device.



**Workflow builder:** Allows you to build modules to fit your needs.



**Manager sign-off:** Provides quick, digital accountability.



**Scheduling tasks and checklists** to the device improve organization and efficiency, leading to high levels of on-site SOPs and other compliance tasks.



**Traceability:** Facilitates seamless tracking of product throughout your operation.



**Offline capabilities:** Allows you to continue to work even if connectivity is lost.



## Hardware



### Gateway

- 4G LTE wireless cell communication
- One gateway supports 15 sensors
- Communication range: 25 meters
- SIM included



### Temperature & Humidity Sensors

- Accurate to +/- 0.5°C (32.9°F) / ± 2% RH
- Records temperatures from -35°C (-31°F) to 50°C (122°F) and humidity from 0% to 100% RH
- Battery life minimum 2 years
- Calibrated to NIST traceable standard



### Wireless Door Sensor

- Wireless, battery-operated
- Operating temperature between -35°C (-31°F) to 50°C (122°F)



### Repeater

- Plug-in device to extend range of wireless network; no network cabling required
- Supports up to 15 endpoint sensors and unlimited routers
- Wireless network range extender (up to 25 meters)



### Mobile App and Bluetooth Thermometer

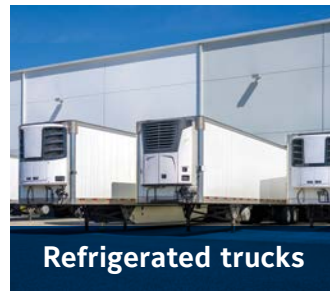
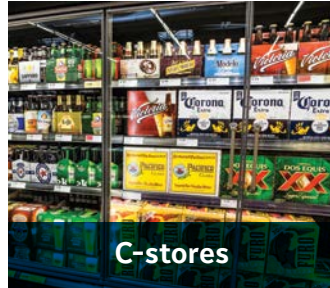
- Mobile application for recording data, connected to our cloud platform.
- Thermometer accuracy ± 0.4°C (± 0.7°F)
- Records temperatures between -75°C to 250°C (-103°F to 482°F)
- Needle and Surface probe types available
- Communicates to Smartphone using Bluetooth up to 50 meters





## A Complete Digital Solution

PENN Connected for Food Safety Compliance sets a new standard in compliance, efficiency, productivity and security, with advanced capabilities and customizable software modules that can be configured to meet your specific business and compliance requirements. Best of all, it's backed by a world-class global support team to ensure local market needs are met.



For additional information, please visit [www.pennconnected.com](http://www.pennconnected.com)

© 2021 Johnson Controls. All Rights Reserved.

The power behind **your mission**

